



nLog

A Logging and Reporting System

nLog is a distributed enterprise-wide alarm and events management system. nLog utilizes the Common Object Request Broker Architecture (CORBA) for its communications infrastructure and is based on the Object Management Groups (OMG) Telecom Log Service standard. nLog includes powerful alarm/event distribution, filtering, viewing, reporting, notification, and logging into any JDBC 2.0 compliant user selectable database. The Telecom Log Service provides users with an easy and efficient means of logging information. nLog can be used for logging information from many diverse sources and can easily be integrated into an existing event or notification environment.

Features

- Configurable message filters to view only certain types of messages
- Changing Column information to be viewed
- Saving current log entries to a file in your local filesystem
- Printing the current log entries
- Audible cues with any event types
- Configurable foreground and background colors with event
- Operator acknowledgement of events (timetaged)
- Complete scrollable display
- Searching for messages via user defined criteria
- Configurable log schedules and attributes

- Scheduled reports sent to multiple destinations (email, printer, file, pager) based on user selected criteria
- Event notifications sent to multiple destinations such as email, printer, file or pager based on user selected criteria

Benefits

- Consolidate all events and alarms
- Monitor events and alarms from any location
- Runs on Windows and Unix platforms
- Based on industry standards
- Easy to integrate with legacy systems

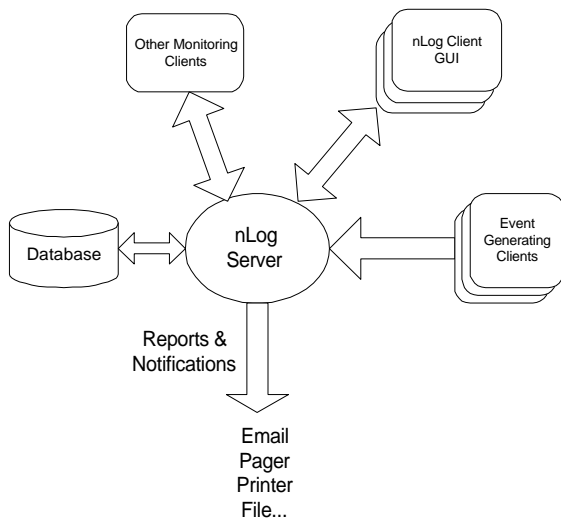
The nLog system is comprised of the following components:

- nLog Administrator - used to configure destinations, create logs, manage users, and other administrative tasks
- nLog Server - for running the nLog environment. The server handles the incoming datastream, stores data in the database and forwards the data to all registered clients. It also sends alarms, notifications, and reports to the defined destinations
- nLog Client - for real-time monitoring of messages and events, setting up column and event filters, and querying the database

We've extended the logging interface to transport data in Extensible Markup Language (XML) to assure complete platform independence. The nLog system can support numerous logs simultaneously. The log structure is defined utilizing XML schema, which allows logging of any kind and format of data.

The nLog system is composed of client and server components. The server resides on a centralized host while the clients run in a distributed environment. The nLog server stores all data into a database and performs scheduling and notification processing. Client applications, running anywhere on the network, can either monitor events as they occur or generate events as needed. Client applications can also query for historical events utilizing a SQL style query language. The CORBA naming and event services are used to gain access to the nLog services.

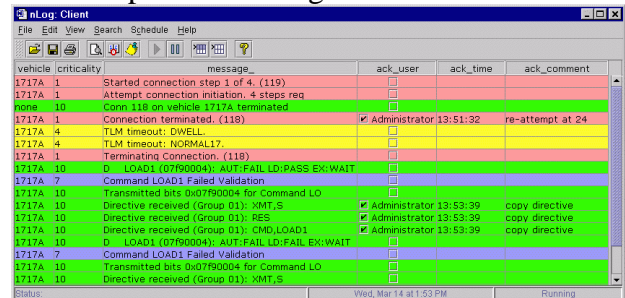
The following drawing depicts the dataflow through nLog:



The capabilities of nLog can be used in many industries. Manufacturing can utilize nLog for quality control and informing required personnel of problems on the plant floor. The Water/Wastewater and Oil/Gas industries can utilize nLog to monitor pipelines, oil-rigs, and processing plants. The Telecommunications industry can utilize nLog to monitor their circuits and switches. nLog is based on CORBA technologies and can easily be plugged into any legacy environment.

The nLog system can run on any platform that supports a Java Virtual Machine version 1.3 or higher.

An example of the nLog client is shown below.



The nLog system is available to be integrated into your environment today.

Naknan, Inc
Sales@naknan.com
 1-281-335-0467

Copyright © 2001 Naknan, Inc. All rights reserved.